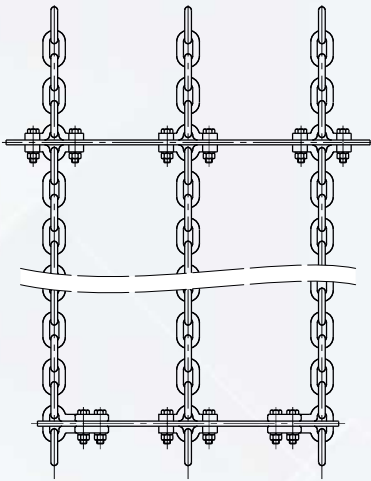
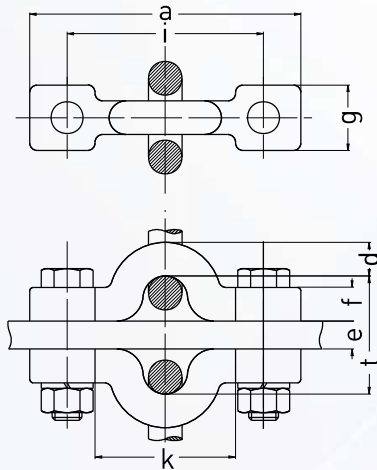


# CNMS Mounting half type scraper connectors

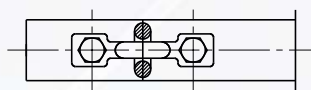
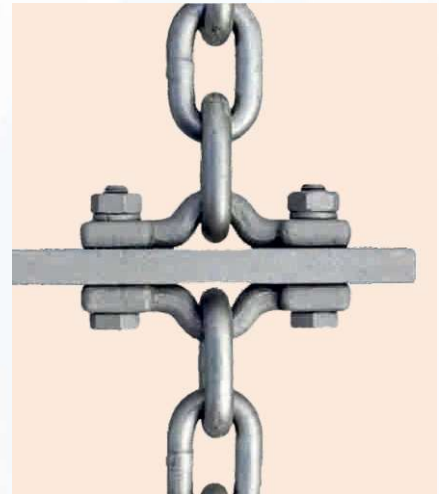
**Forged type Half connectors for endless chain scraper systems with dual bolting holes for proper match and grip.**



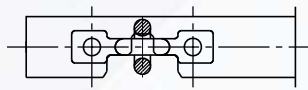
Split scraper bar attachment for triple strand chain



Split scraper bar attachment



Arrangement for pocket toothed chain wheels



Arrangement for wheels with projecting teeth or toothless wheels

To suit chain nominal diam. x pitch (mm) d x t	DIN chain	weight (kg/each)	suitable bolt / nut	dimensions (mm)						case hardened CNMS qualities, MBK (kN)	
				a	e	f	g	i	k	CNMS	CNMS
10 x 35	764	0.30	M10 x 45	95	12	10	22	70	45	29	47
10 x 50	762	0.35	M10 x 60	95	27	10	22	70	45	29	47
18 x 63	764	0.80	M16 x 70	145	15	18	35	105	75	95	153
18 x 64	764	0.90	M16 x 75	145	16	18	35	105	75	95	153
20 x 70	764	1.00	M16 x 75	150	15	20	35	110	80	118	188
20 x 100	762	1.10	M16 x 110	150	45	20	35	110	80	118	188

Further dimensions and qualities on request. MBK = min. breaking load